

SEWO 3 Million HD License Plate Recognition Camera with AI Parking Management and Offline Running for Efficient Lot Systems

Our Product Introduction

for more products please visit us on turnstilebarriers.com

Basic Information

- Place of Origin: Guangdong, China
- Brand Name: SEWO
- Model Number: CP350
- Minimum Order Quantity: 1
- Price: CN¥3,448.30-5,517.28

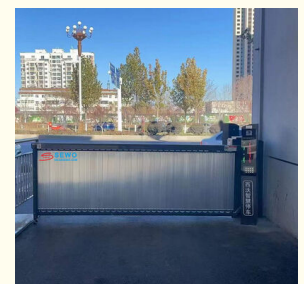


Product Specification

- Housing Size: 1380*180*200 Mm
- LPR Camera: 3 Million HD
- Built-in Algorithm: License Plate Recognition
- List Support: Black-list And White-list
- Display Type: LED Display Screen
- Offline Capability: Support Offline Running
- Plate Types: Over 100 Countries Or Regions
- Standard Configuration: ALPR Parking Equipment, Parking Boom Barrier, Parking Management Software
- Optional Equipment: Parking Payment Machine
- Remote Management: Add Remote One Click Call Terminals
- Camera Resolution: 3 Million HD
- Algorithm Type: License Plate Recognition
- Display Screen: LED
- Offline Operation: Supported



More Images



Product Description

SEWO AI-Powered License Plate Recognition Parking System

Advanced license plate recognition camera integrated with AI parking management system and payment machines for efficient parking lot operations.

Why Choose SEWO

Verified by TÜV Rheinland

22+ Years

VEHICLE & PEDESTRIAN ACCESS CONTROL

Professional Management System Supplier

ISO 9001 CE IAF CNAS EAC MA IP66

Centered on customer demands, we provide customized services. Ensure that every customer can get a satisfactory solution.

22+ years Industry pioneers and profound experience.	Customized service Customized and integrated system solutions for multiple scenarios.	National Certification National High-tech Certification ; CE certificate, Appearance & Utility model patents ; Professional Testing reports, etc.	Perfect Service System From pre-sale to after-sale support, we can provide value-added services such as customized development and system training.
--	---	---	---

Our Featured Services

Over 20 years of industry technical experience with multiple patents and testing reports

Experienced R&D team providing comprehensive services including project proposal design, on-site rendering, 3D rendering, and customization

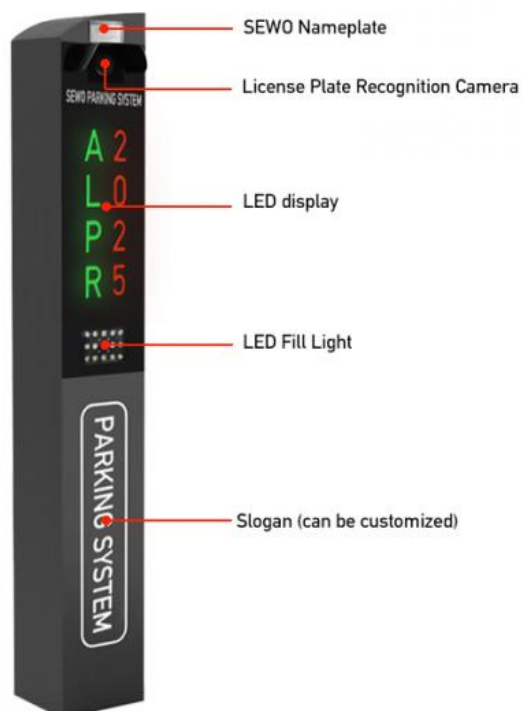
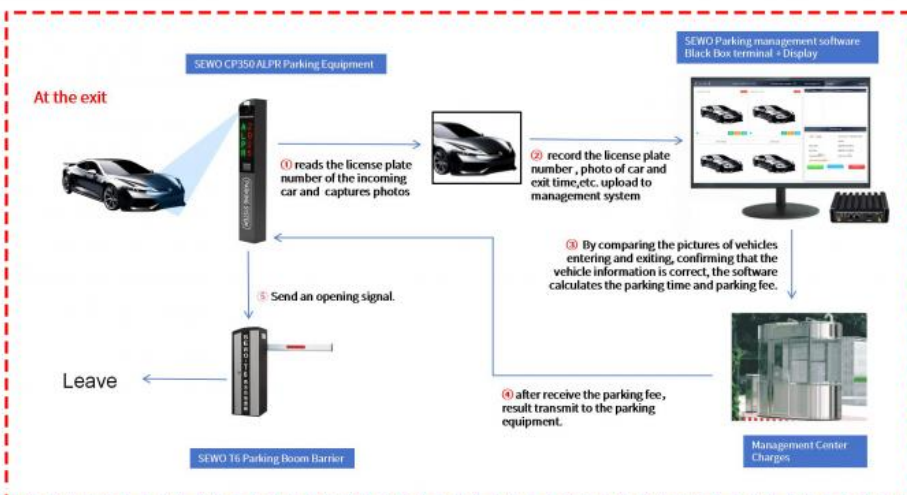
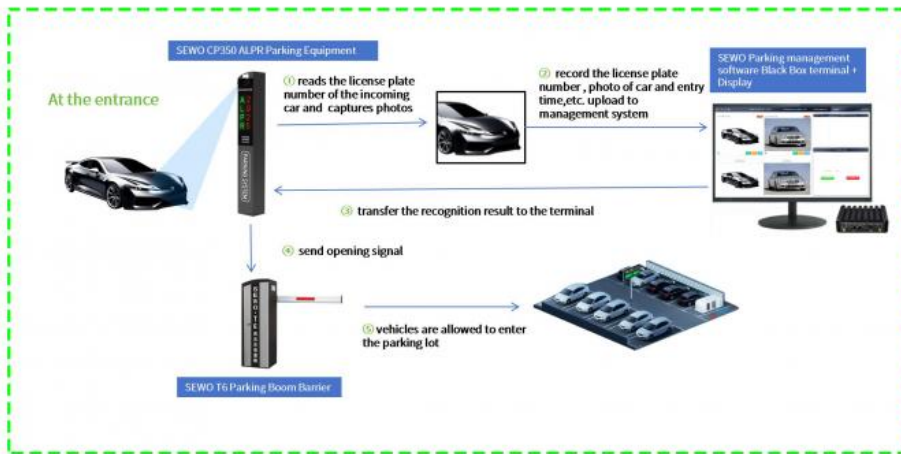
Support for small order customization with high-quality services

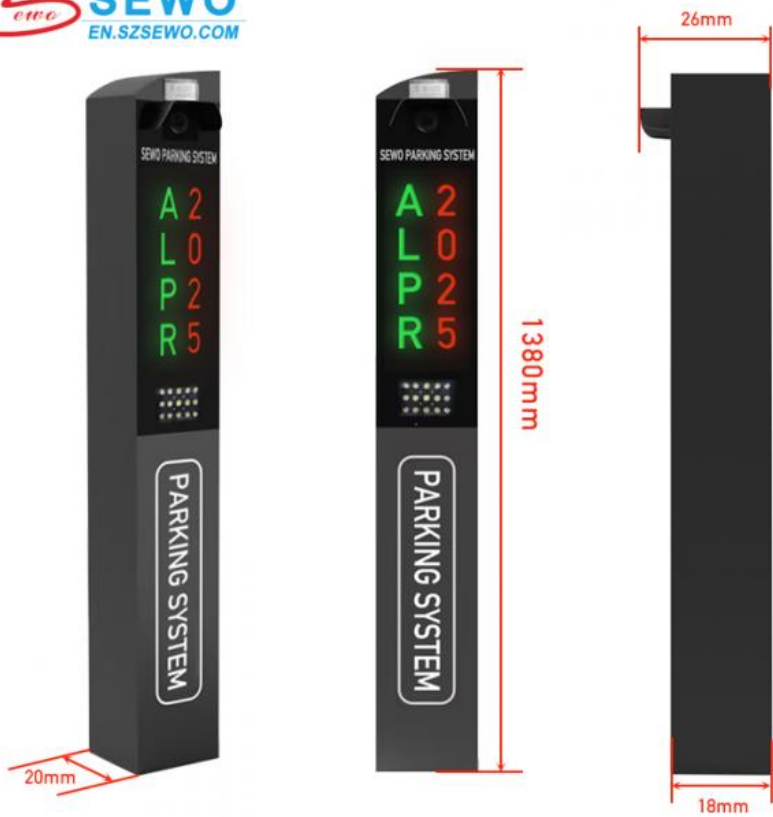
Contact us now for the most favorable pricing and high-quality service!

Product Specifications

Product Name	License Plate Recognition Parking Equipment
Product No.	SEWO-CP350
Housing Size	1380*180*200 mm
LPR Camera	3 million HD LPR Camera
Built-in Technology	License Plate Recognition Algorithm
Security Features	Support for black-list and white-list
Display	LED display screen
Key Features	Support offline running, etc.
Supported License Plate Types	Over 100 countries or regions (including most of Asia, Europe, Africa, Latin America, and South America)

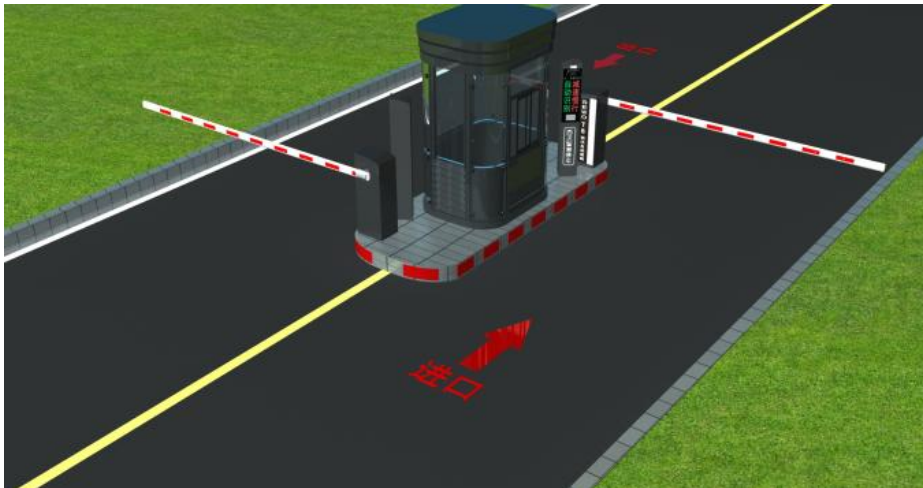
SEWO-CP350 License Plate Recognition Parking System





Common Project Solutions

ALPR Parking System (Entrance *1 + Exit *1)



Standard Configuration: ALPR Parking Equipment, Parking Boom Barrier, Parking Management Software, Parking Payment Machine (Optional)

For Temporary Visitors: Vehicles pay parking fee upon exit, barrier opens after management confirmation or automatic payment machine processing.

For Long-term Customers: Registered license plates automatically recognized for entry/exit with records maintained in management backend.

ALPR Parking System + Ticket/Card Parking System



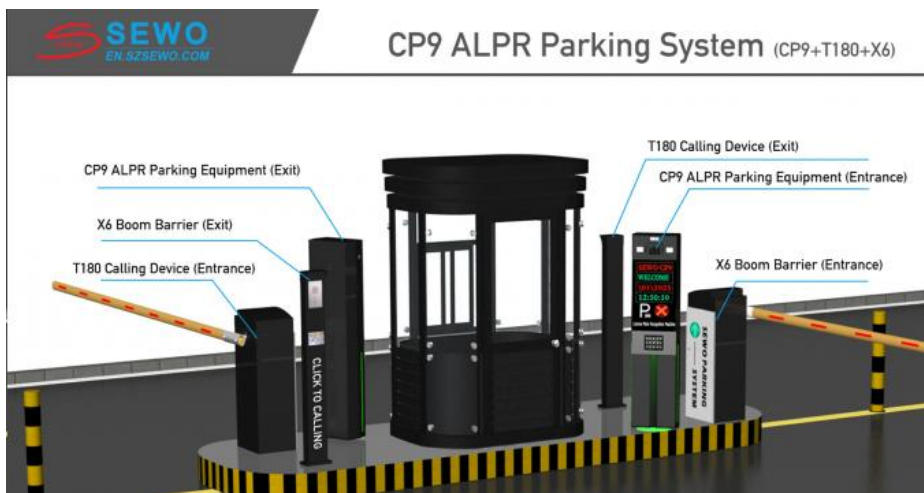
Standard Configuration: ALPR Parking Equipment, Ticket/Card Parking Equipment, Parking Boom Barrier, Parking Management Software, Real-time monitoring camera (Optional), Parking Payment Machine (Optional)

For Temporary Visitors: Standard payment process upon exit.

For Long-term Customers: Automatic license plate recognition for registered vehicles.

For Vehicles Without License Plates: Tickets or cards collected at entrance, standard payment process upon exit.

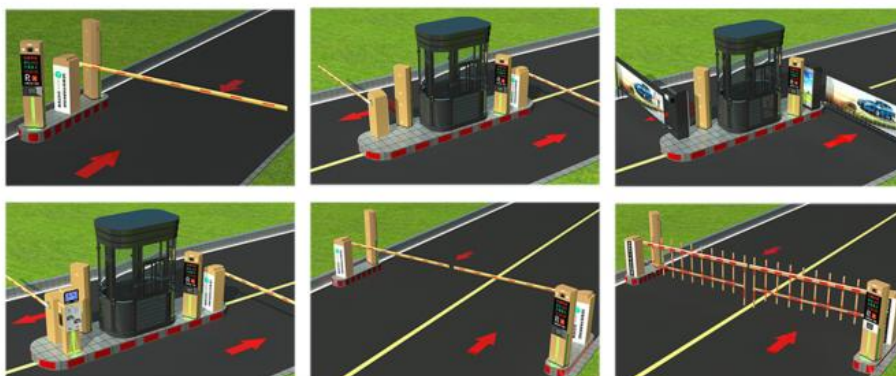
ALPR Parking System with Remote Management Center



For Temporary Visitors: Standard payment process with management confirmation.

For Long-term Customers: Automatic license plate recognition for registered vehicles.

Features: Remote one-click call terminals for real-time contact with management center.



Customized Services

The above solutions are for reference only. Contact us with your specific requirements for the most suitable solutions, competitive pricing, and

excellent service.

Customer Photos



Our Advantages

OUR EXHIBITION



PATENTS & CERTIFICATIONS



Centered on customer demands, we provide customized services. Ensure that every customer can get a satisfactory solution.



OUR SERVICE TEAM





Frequently Asked Questions

Having over 22 years of professional experience in the
Vehicle & Pedestrian Access Control.

- ★ Free Project Design
- ★ On Site Rendering
- ★ Competitive Price

Welcome to Inquire!

Contact Supplier



1. What is the strength of your company in this industry?

Our company focuses on developing new techniques and products since 2003. SEWO ranks among the top 10 famous brands of car parking systems in China.

2. What are your company's advantage products?

Shenzhen Sewo Technology Ltd. is a professional high-tech enterprise specializing in Smart Parking Management Systems, Barrier Gates, Access Control Systems, and related security products.

3. How about the quality of your products?

We have passed "CE" and "ISO9001:2008" international quality standards and have won numerous honors including "China Top 10 Parking Management System Supplier."

4. How about customization requests?

We support OEM/ODM services with over 20 years of industry experience, providing appropriate designs and smart access management solutions.

5. How about delivery time?

Regular products require 5-10 working days. Actual delivery time depends on specific product requirements.

 **SEWO** Shenzhen SEWO Science & Technology Co., Ltd.

 +8618118781652

 sewo688@szsewo.com

 turnstilebarriers.com

Busha Road No 231. Buji Street. Longgang District. Shenzhen. China