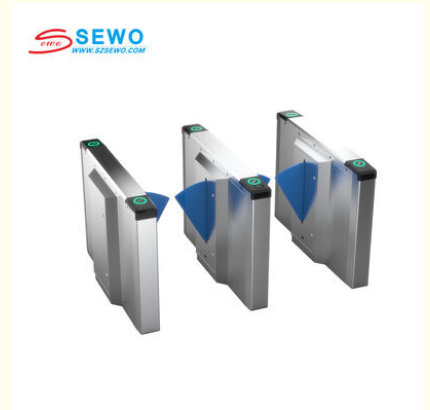


## 201 Stainless Steel Flap Barrier Gate with Bi-directional Access Control Turnstile for 30-40 People/Minute

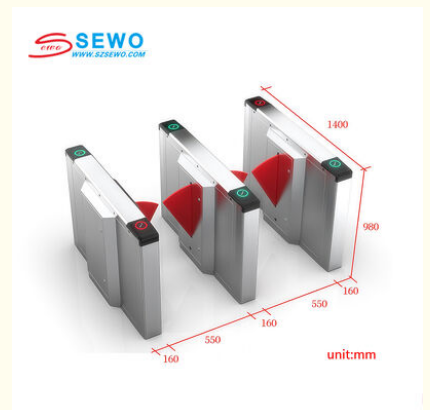
### Basic Information

- Place of Origin: China
- Brand Name: SEWO
- Certification: CE ISO9001
- Model Number: SEWO- YD2001
- Minimum Order Quantity: 1 lane
- Price: Negotiable
- Packaging Details: wooden box
- Delivery Time: 5-7 working days
- Payment Terms: T/T, Western Union, MoneyGram, L/C, D/A, D/P
- Supply Ability: 2000 sets per month



### Product Specification

- Product Name: Flap Barrier Gate Turnstile
- Material: 201 Stainless Steel
- Drive Voltage: 24V
- Dimension: 1400\*160 (300) \*980mm
- Type: Flap Barrier Turnstile Gate
- Channel Width: 550MM
- Warranty: 12 Months
- Color: Stainless Steel Color
- Direction: Single / Bi-direction
- Transit Speed: 30-40 People / Minute
- Usage: Office, Hotel, Library, Metro Station, ect.
- Highlight: **201 Stainless Steel Flap Barrier Gate, Bi-directional Access Control Turnstile, 30-40 people/minute Pedestrian Barrier System**



## Product Description

### Pedestrian Flap Barrier Gate Automation Systems Access Control Entrance Barrier Systems

#### Discriptions of Barcode Scanner Turnstile:

SEWO flap barrier turnstile is designed for applications where robust and reliable access control is a requirement but space is limited. The turnstile are available with straight or rounded cabinet ends and a variety finish. A durable cabinet construction ensures long life and minimum maintenance.

Integrating mechanism, electronics and micro-processor advanced technologies. Flap turnstile designs with tailored stainless steel make its elegance-looking, durable and anti-oxidation. The flap barrier is a improvement of intelligent tripod turnstiles. Equip various card-reading machines with hi-performance security protection SW to realize real-time warning and clever LED counter display guide passers. It balance pedestrian intelligent control and management.

#### Key Features of Automatic Flap Barrier:

Problem-self-checking function.

Many options of working ways: bi-direction card reading; one direction card reading and another no reading; one direction card reading and another freely. And single direction photocell controlled passing and close. Working ways can be set in the control panel.

When power off, arm open automatically and power on again, arm will be held automatically.

When valid card read and passenger passed, arm can be delayed to close from 1-60s which can be set in the control panel.

Auto-reposition function: After card read, passenger not pass within regulated time period, full-height turnstile will cancel this passing right. And the regulated time period for passing can be set by managers.

If passenger pass without card read or valid card read, flap barrier will alarm untill passenger get back from the flap barrier and then take a valid card to be read for passing.

Swing barrier is with 485 interface for long-distance control concern.

Anti-rush function: if there is no open single, arm will be holding tightly.

Double anti-clipping function: photocell anti-clipping and mechanical anti-clipping. When passenger is going through the swing barrier, photocell will detect out this situation and will not close. After passenger passed, arm will close automatically. During its reposition, if arm meets any obstacle, arm will get back automatically or stop working for a while with very slight force. Also it will alarm.

Flap barrier is with standard electrical interface for the integration of various readers and writers.

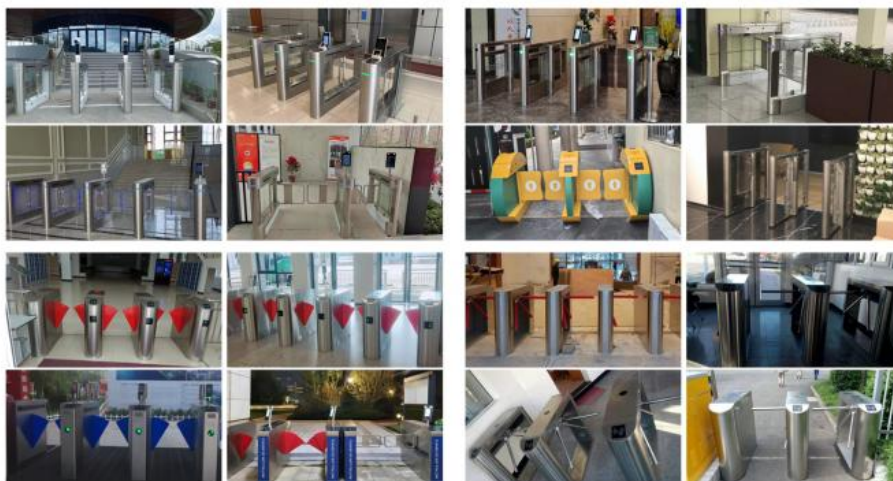
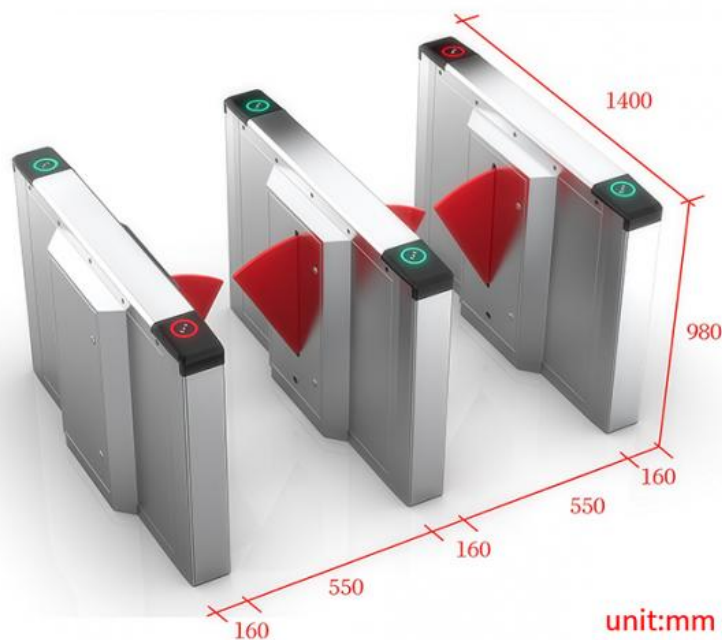
Swing barrier can count how many passenger has passed and will show it in the LED display.

#### Specifications of Pedestrian Barrier Gate :

Product Name	Flap Barrier Gate
Model No.	SEWO-YD2001
Housing Material	201 stainless steel
Product Size(L*W*H)	1400*160 (300) *980mm
Channel width	550MM
Passing Speed	30~40 people / minute
Driving Motor	24V DC motor
Infrared detection	3 Pairs
Working Voltage	220V
MCBF	≥ 3,000,000 times

#### Applications:

Tripod turnstiles are mainly used in parks, subway, customers, airport, bus station, office building, scenic spot, community, attractions, and exhibition hall doors, residential, Construction Sites, Industrial Plants, Marquee Golf Tournaments, State Fairs, Special Sporting Events and Festivals!



#### FAQ

1, What is the strength of your company in this industry?

Our company pays much attention to bringing and developing new technique and products since the foundation in 2003. Our brand "SEWO" has ranked among the top 10 famous brands of car parking systems and facilities in China.

2, What is the advantage products of your company?

Shenzhen Sewo Technology Ltd. is a professional high-tech enterprise, which integrates the development, manufacturing, marketing, and service of Smart Parking Management System, Flap Barrier, Tripod Turnstile, Swing Gate, Parking Guidance System, Barrier Gate, Parking Lock, Access Control Systems and other related security products.

3, How about the quality of your product?

With our exquisite technology and strict quality testing system, we passed "CE" and "ISO9001:2008" international quality assessment standards. Our company also has won many honors, such as "China Top 10 Parking Management System Supplier", "AAA grade quality, service and prestige enterprise in China", and so on. Professional R&D team has strong capacity to be committed to continuously creating high quality products and service.

4, How about some customization request?

We support OEM / ODM service, more than 20 years industry experience will bring appropriate design for you, not only products, but also a smart access management solution expert.

5, Do you have agency for after-sales service?

Any question about products, you can find our sales anytime. We will provide life-time technology support. We have established many branch offices and gained much agents at home. Our sales and service network spreads all over the world. We also have extensive sales channels in Southeast Asia, the Middle East, Africa, Europe, and America. We warmly welcome

customers or agents all over the world to join us to construct an intelligent , safe, convenient and harmonious society.

6, How about the delivery time?

Regular products need 5-10 working days.

The delivery time of customized products is according to your requirement.

 **SEWO** Shenzhen SEWO Science & Technology Co., Ltd.



+8618118781652



sewo688@szsewo.com



turnstilebarriers.com

Busha Road No 231. Buji Street. Longgang District. Shenzhen. China