

Smart Building Swing Gate Turnstile Energy Efficient and BACnet Integration for Office Complexes

Our Product Introduction

for more products please visit us on turnstilebarriers.com

Basic Information

- Place of Origin: China
- Brand Name: SEWO
- Certification: CE ISO9001
- Model Number: SEWO-B6-LM120
- Minimum Order Quantity: 1 lane
- Price: Negotiable
- Packaging Details: wooden box
- Delivery Time: 5-7 working days
- Payment Terms: T/T, Western Union, MoneyGram, L/C, D/A, D/P
- Supply Ability: 2000 sets per month



Product Specification

- Product Name: Dazzling Aluminum Swing Gate
- Material: Aluminum Alloy
- Power Supply: AC220V
- Dimension: 1400mm*120mm*1000mm
- Type: Swing Gate Turnstile
- Passing Width: 550mm 1080mm
- Working Environment: Indoor / Outdoor (Shelter)
- Warranty: 12 Months
- Color: Silver Or Customized
- Direction: Single/ Bi-direction
- Transit Speed: 20~60 People/minute
- Usage: Office, Hotel, Library, Metro Station, ect.
- Highlight: **BACnet Integration Swing Gate Turnstile, Energy Efficient Swing Gate Turnstile, Office Complexes Swing Gate Turnstile**



More Images



Product Description

Smart Building Swing Gate Turnstile Energy Efficient and BACnet Integration for Office Complexes

Discriptions of Turnstile Gate:

The **Swing Gate Turnstile** is a cutting-edge access control system designed to enhance security, streamline pedestrian flow, and deliver unmatched durability in high-traffic environments. Ideal for offices, stadiums, metro stations, airports, and industrial facilities, this turnstile combines sleek aesthetics with heavy-duty performance to meet modern security demands.

SEWO dazzling swing gate Series is specially designed for venues that requires wide passing and a good appearance. It support QR Code, Fingerprint, Face recognition, IC or ID Card, Sensing, usually open and other access methods.

Adopting national standard aluminum molding and streamlined color light strip, the whole design is simple and elegant, and full of dynamism. The movement structure produced by advanced technology ensures the reliability of long-term operation. It can be widely used in residential areas, universities, office buildings and other venues

Key Features of Flap Barrier Gate:

1.Strong and stable control core

1.1.Advanced non-destructive movement structure, and equipped with high-quality brushless DC motor, to achieve accurate control, stable operation and long service life;

1.2.The mean cycles between failures is more than 5 million times;

1.3.Support advanced dual intelligent anti-clip technology includes infrared anti-clip and mechanical anti-clip , comprehensive protection of pedestrian safety;

1.4.All electrical modules adopt a safety voltage below 24V to prevent pedestrian injury from electric shock;

1.5.When the power is off, the system will automatically unlock the swing arm, which can be manually pushed into the open state to facilitate the evacuation of people.

1.6.It can sensitively perceive illegal intrusion behaviors such as reverse passage and trailing, and can issue warnings through sound and light.

2.Easy to maintain and install

2.1.Equipped with fault self-check function,it can alarm and prompt in case of abnormalities, making it convenient for users to maintain and use;

2.2.The waterproof level is up to IP54, ensuring the waterproof performance of the outdoor gate.

3.Other features

3.1.Build-in voice chip can achieve simple voice prompts and vividly and effectively guide pedestrians to pass;

3.2.Support displaying turnstile control board configuration information through the display screen, and configure parameters such as working mode (normally open, normally closed), control mode, and opening time through buttons. Full digital adjustment, convenient and simple adjustment control;

3.3.Equipped with multiple serial ports to meet the simultaneous access of multiple card reader devices. For serial port connection, you need to purchase a controller.

3.4.Support online operation and maintenance to meet the specification requirements of fault diagnosis, event management, traffic mode configuration, and movement control;

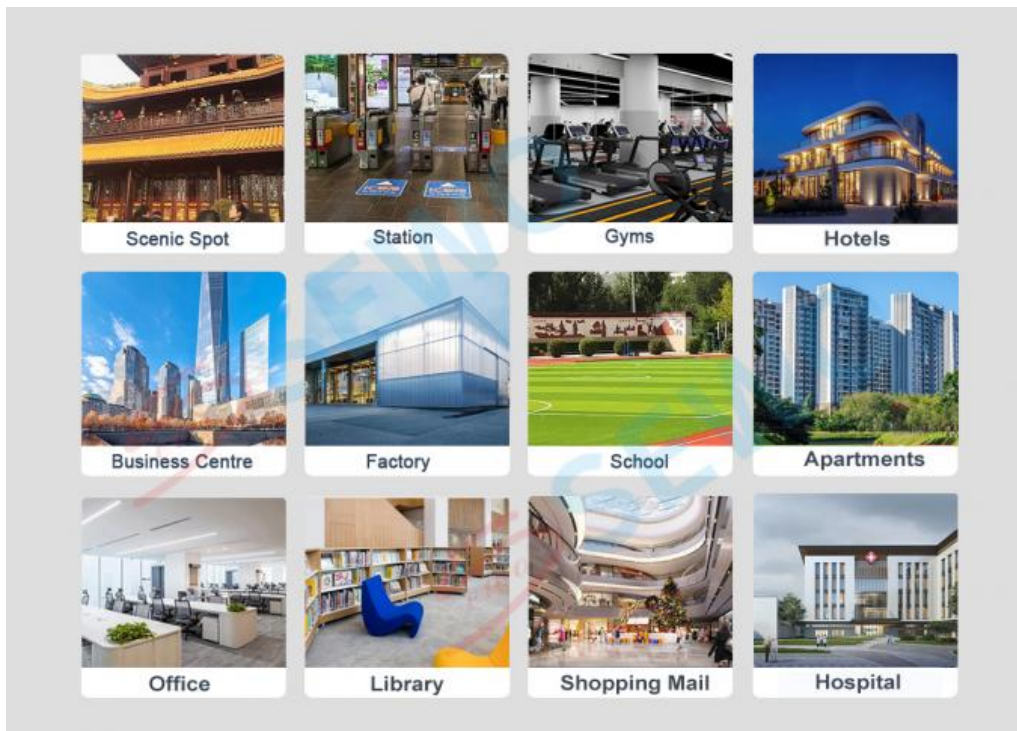
3.5.Support the turnstile to detect the number of passengers through infrared detection, and upload data to the management platform for data statistics; And record the number of abnormal events such as trailing, reverse, and forced entry, and upload alarms.

Specifications of Flap Barrier Turnstile Gate:

Product Name	Dazzling Turnstile Series
Model No.	SEWO-B6-LM120
Housing Material	Aluminum Alloy
Product Size(L*W*H)	1400*120*1000mm
Passing Width	550mm 1080mm
Passing Speed	20~60 people/minute
Driving Motor	24V Brushless motor
infrared detection	4 Pairs
Working Voltage	220V
MCBF	≥ 5,000,000 times

Applications:

Tripod turnstiles are mainly used in parks, subway, customers, airport, bus station, office building, scenic spot, community, attractions, and exhibition hall doors, residential, Construction Sites, Industrial Plants, Marquee Golf Tournaments, State Fairs, Special Sporting Events and Festivals!



FAQ

1, What is the strength of your company in this industry?

Our company pays much attention to bringing and developing new technique and products since the foundation in 2003. Our brand "SEWO" has ranked among the top 10 famous brands of car parking systems and facilities in China.

2, What is the advantage products of your company?

Shenzhen Sewo Technology Ltd. is a professional high-tech enterprise, which integrates the development, manufacturing, marketing, and service of Smart Parking Management System, Flap Barrier, Tripod Turnstile, Swing Gate, Parking Guidance System, Barrier Gate, Parking Lock, Access Control Systems and other related security products.

3, How about the quality of your product?

With our exquisite technology and strict quality testing system, we passed "CE" and "ISO9001:2008" international quality assessment standards. Our company also has won many honors, such as "China Top 10 Parking Management System Supplier", "AAA grade quality, service and prestige enterprise in China", and so on. Professional R&D team has strong capacity to be committed to continuously creating high quality products and service.

4, How about some customization request?

We support OEM / ODM service, more than 20 years industry experience will bring appropriate design for you, not only products, but also a smart access management solution expert.

5, Do you have agency for after-sales service?

Any question about products, you can find our sales anytime. We will provide life-time technology support. We have established many branch offices and gained much agents at home. Our sales and service network spreads all over the world. We also have extensive sales channels in Southeast Asia, the Middle East, Africa, Europe, and America. We warmly welcome customers or agents all over the world to join us to construct an intelligent, safe, convenient and harmonious society.

6, How about the delivery time?

Regular products need 5-10 working days.

The delivery time of customized products is according to your requirement.

 **SEWO** Shenzhen SEWO Science & Technology Co., Ltd.



+86 18128807893



sewo198@szsewo.com



turnstilebarriers.com

Busha Road No 231. Buji Street. Longgang District. Shenzhen. China