

## Fully Automatic Pedestrian Sliding Turnstile Barrier Gate Access Control

### Our Product Introduction

for more products please visit us on [turnstilebarriers.com](http://turnstilebarriers.com)

#### Basic Information

- Place of Origin: China
- Brand Name: SEWO
- Certification: CE IS09001
- Model Number: SEWO-P02BD
- Minimum Order Quantity: 1 lane
- Price: Negotiable
- Packaging Details: wooden box
- Delivery Time: 5-7 working days
- Payment Terms: T/T, Western Union, MoneyGram, L/C, D/A, D/P
- Supply Ability: 2000 sets per month



#### Product Specification

- Product Name: Sliding Turnstile Gate
- Type: Fully Automatic Sliding Turnstile Gate
- Dimension: 1400\*335\*1000 Mm
- Power Supply: AC220V
- Communication: TCP/IP
- Warranty: 12 Months
- Application: Airport, Office, hotel, supermarket, hospital Entrance
- Unlock Time: 1s
- Passing Speed: 40 People/min
- Working Environment: Indoor/outdoor
- Housing Material: 304# Stainless
- Color: Black Or Customized
- Highlight: Fully Automatic Sliding Turnstile Barrier Gate, Sliding Turnstile Barrier Gate Access Control, Pedestrian Sliding Turnstile Barrier Gate



## Product Description

# Sliding Speed Gates Security Rfid Card Reader Face Recognition Pedestrian Sliding Turnstile Barrier Gate System

### Discriptions of Sliding Turnstile Gate:

The Motorised sliding gate is typically used for Pedestrian Movement in factories, Offices, Amusement Parks, Museums, and Movie Theatres etc. The Swing Gate is offered with a Brushed DC Motor for the movement of the Swing Arm and can be integrated with varied access Control Systems. The Drive offers an MCBF of 3 Mil Cycles and is ideal for indoor application but nevertheless can be deployed outside a building under a canopy for protection from the elements. The Swing gate though can process high numbers of people it for handicap movement and hence would offer much lower throughput as against what has been indicated above. The Gate is offered in both SS-304 & Mild Steel Powder-coated versions.

### Features of Sliding Turnstile Gate:

Problem-self-checking function.

Many options of working ways: bi-direction card reading; one direction card reading and another no reading; one direction card reading and another freely. And single direction photocell controlled passing and close. Working ways can be set in the control panel.

When power off, arm open automatically and power on again, arm will be held automatically.

When valid card read and passenger passed, arm can be delayed to close from 1-60s which can be set in the control panel.

Auto-reposition function: After card read, passenger not pass within regulated time period, full-height turnstile will cancel this passing right. And the regulated time period for passing can be set by managers.

If passenger pass without card read or valid card read, flap barrier will alarm untill passenger get back from the flap barrier and then take a valid card to be read for passing.

Swing barrier is with 485 interface for long-distrance control concern.

Anti-rush function: if there is no open single, arm will be holding tightly.

Double anti-clipping function: photocell anti-clipping and mechanical anti-clipping. When passenger is going through the swing barrier, photocell will detect out this situation and will not close. After passenger passed, arm will close automatically. During its reposition, if arm meets any obstacle, arm will get back automaticlly or stop working for a while with very slight force. Also it will alarm.

Flap barrier is with standard electrical interface for the integration of various readers and writers.

Swing barrier can count how many passenger has passed and will show it in the LED display.

Direction display to guide passenger which direction is to go.

Card-reading with memory or without memory function.

Flap barrier can control the population inside in the control of software.

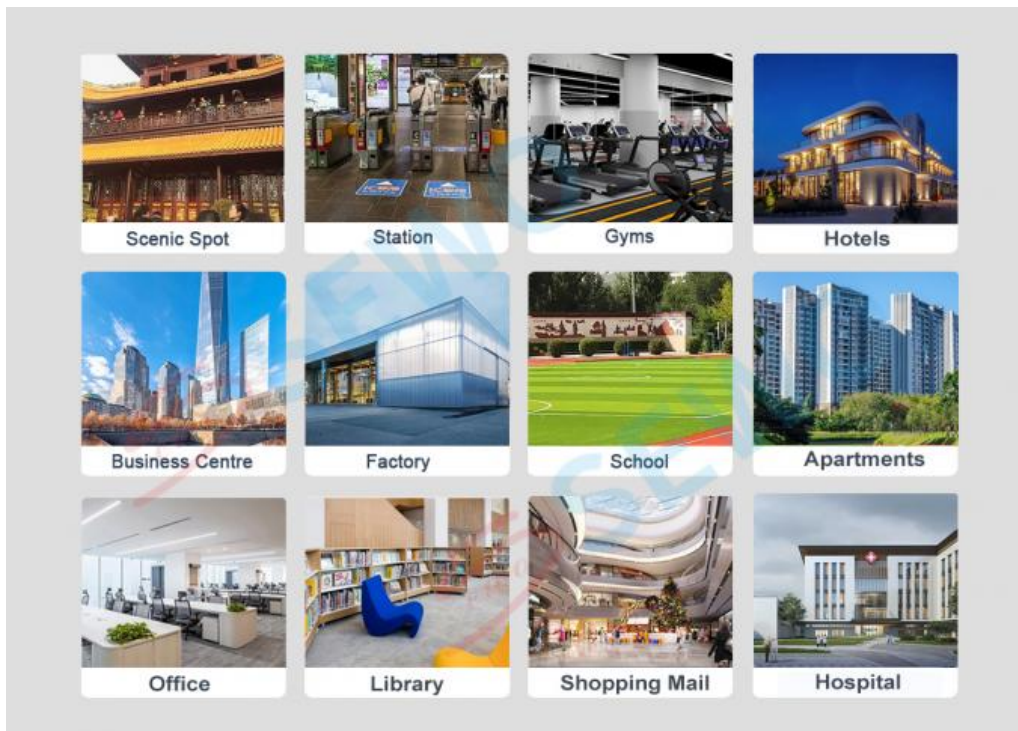
Stable running with little noise.

### Specifications of Sliding Turnstile Gate:

Product Name	Sliding Turnstile Gate
Model No.	SEWO-P02BD
Housing Material	SUS304 stainless steel
Swing Arm Material	PMMA
Passing Width:	≤550mm
Product Size(L*W*H)	1400*335*1000mm
Unlock time	1s
Passing Speed	40 people/minute
Driving Motor	DC 24V Brushless motor
Working Voltage	220V,50Hz
MCBF	≥ 5,000,000 times

### Applications:

The turnstiles are mainly used in parks, subway, customers, airport, bus station, office building, scenic spot, community, attractions, and exhibition hall doors, residential, Construction Sites, Industrial Plants, Marquee Golf Tournaments, State Fairs, Special Sporting Events and Festivals!



#### FAQ

1, What is the strength of your company in this industry?

Our company pays much attention to bringing and developing new technique and products since the foundation in 2003. Our brand "SEWO" has ranked among the top 10 famous brands of car parking systems and facilities in China.

2, What is the advantage products of your company?

Shenzhen Sewo Technology Ltd. is a professional high-tech enterprise, which integrates the development, manufacturing, marketing, and service of Smart Parking Management System, Flap Barrier, Tripod Turnstile, Swing Gate, Parking Guidance System, Barrier Gate, Parking Lock, Access Control Systems and other related security products.

3, How about the quality of your product?

With our exquisite technology and strict quality testing system, we passed "CE" and "ISO9001:2008" international quality assessment standards. Our company also has won many honors, such as "China Top 10 Parking Management System Supplier", "AAA grade quality, service and prestige enterprise in China", and so on. Professional R&D team has strong capacity to be committed to continuously creating high quality products and service.

4, How about some customization request?

We support OEM / ODM service, more than 20 years industry experience will bring appropriate design for you, not only products, but also a smart access management solution expert.

5, Do you have agency for after-sales service?

Any question about products, you can find our sales anytime. We will provide life-time technology support. We have established many branch offices and gained much agents at home. Our sales and service network spreads all over the world. We also have extensive sales channels in Southeast Asia, the Middle East, Africa, Europe, and America. We warmly welcome customers or agents all over the world to join us to construct an intelligent, safe, convenient and harmonious society.

6, How about the delivery time?

Regular products need 5-10 working days.

The delivery time of customized products is according to your requirement.

 **SEWO** Shenzhen SEWO Science & Technology Co., Ltd.



+86 18128807893



sewo198@szsewo.com



turnstilebarriers.com

Busha Road No 231. Buji Street. Longgang District. Shenzhen. China