

## 304 Stainless Steel Supermarket Barrier Turnstile Gate 20-60people/minute

### Our Product Introduction

#### Basic Information

- Place of Origin: China
- Brand Name: SEWO
- Certification: CE ISO9001
- Model Number: SEWO-B6-316
- Minimum Order Quantity: 1 lane
- Price: Negotiable
- Packaging Details: wooden box
- Delivery Time: 5-7 working days
- Payment Terms: T/T, Western Union, MoneyGram, L/C, D/A, D/P
- Supply Ability: 2000 sets per month



#### Product Specification

- Product Name: Vertical Swing Gate
- Material: 304 Stainless Steel
- Power Supply: AC220V
- Dimension: 1200\*280\*980 Mm
- Type: Swing Gate
- Arm Length: 60-90CM
- Working Environment: Indoor / Outdoor ( Shelter)
- Warranty: 12 Months
- Color: Silver Or Customized
- Direction: Single/ Bi-direction
- Transit Speed: 20~60 People/minute
- Usage: Office, Hotel, Library, Metro Station, ect.
- Highlight: **304 Stainless Steel Supermarket Barrier, Supermarket Barrier Turnstile Gate, Barrier Turnstile Gate 20people/min**



## Product Description

### 304 Stainless Steel Swing Gate Turnstile Electronic Security Swing Barrier Gate for Supermarket

#### Discriptions of Swing Gate Turnstile :

The SEWO B6 Series Swing barriers developed, researched and produced by our company are used to meet to place that highend and more width requiry. The housing comes out from stainless steels pressing which is good-looking, anti-rust and durable. It can be integrated with magnetic card, barcode, IC or ID card ,face recognition and QR Code by standard electrical interface, thus good-order and civilized passing means are realized and unauthorized persons will never be allowed to get in. Meanwhile, to meet fire-control passage requirements, swing barrier's arms will open automatically if power off and there will be enough time to organize people to get out.

#### Key Features of Swing Gate:

Directional VFD Optical Signals----Green Arrow or Red Cross signage  
Only one person can pass with one card  
Collect the break-in information  
Installed in indoor or outdoor  
Well lightning and grounding  
Multi-working mode----Forbidden, Controlled or Free Passing optional  
Easily integrated with any type of readers---such as Magnetic card, Barcode card, RFID Card and so on  
Card-swiping memory function  
Statistics collection automatically  
Manual release when meet the outside push  
Always open or close mode. In an emergency, the passage will be freely pass automatically  
Bi-directional passing or single way passing  
Self-inspection and alarm  
Can program the running status online by setting the built-in keys  
LED Counter, Direction indicator  
Infrared detector to sense the passing status.

#### Specifications of Swing Turnstile Gate :

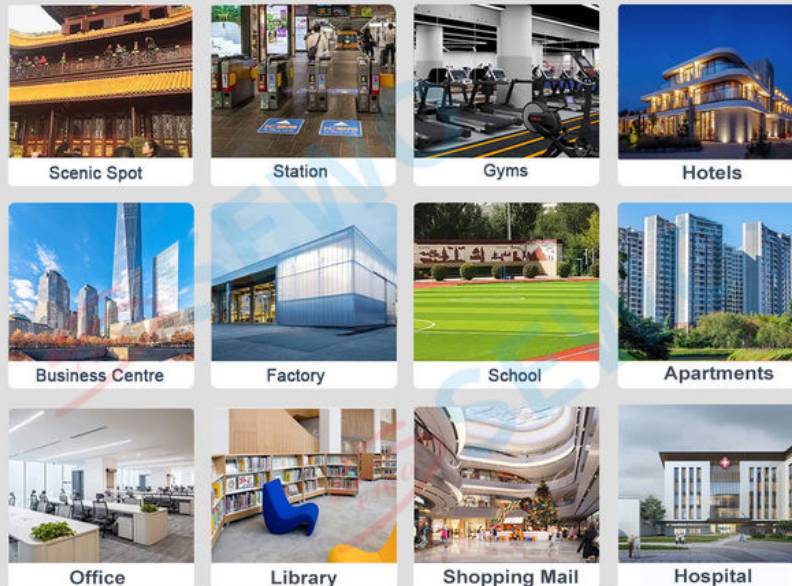
Product Name	Swing Gate Turnstile Series
Model No.	SEWO-B6-316
Housing Material	304 Stainless Steel
Thickness of Housing	1.2mm
Product Size(L*W*H)	1200 * 280 * 980 mm
Arm Length	600~900 mm
Transit speed	45 people/minute
Unlock time	0.4 second
MCBF	≥ 5,000,000 times

#### Advantages of Swing Gate:

- 1). Running stably without noise and mechanical impact
- 2). The number of the passing persons can be counted via the built-in people counter
- 3). Several ways of working modes for option
- 4). Bi-direction or one direction permitted. One forbidden. Or one direction charged. One for free . And all the working modes set by the buttons in the main control board
- 5). Beam falling and lifting can be controlled in far distance so to satisfy the special require ment of the users and the request of fire protection
- 6). LED Direction-guide lights in the turnstile to tell you whether the direction to go or not
- 7). The standard electrical interface connected with various kinds of reader and writer equipments
- 8). All the functions realized in one integration machine and controlled and managed by the computer in the far distance
- 9). The number of the persons passed can be counted automatically which can also be display in LED
- 10). The function with or without card-reading memory can be set according to your demand
- 11). Self-check and alarm for convenient to operate

#### Applications:

Tripod turnstiles are mainly used in parks, subway, customers, airport, bus station, office building, scenic spot, community, attractions, and exhibition hall doors, residential, Construction Sites, Industrial Plants, Marquee Golf Tournaments, State Fairs, Special Sporting Events and Festivals!



#### FAQ

1, What is the strength of your company in this industry?

Our company pays much attention to bringing and developing new technique and products since the foundation in 2003. Our brand "SEWO" has ranked among the top 10 famous brands of car parking systems and facilities in China.

2, What is the advantage products of your company?

Shenzhen Sewo Technology Ltd. is a professional high-tech enterprise, which integrates the development, manufacturing, marketing, and service of Smart Parking Management System, Flap Barrier, Tripod Turnstile, Swing Gate, Parking Guidance System, Barrier Gate, Parking Lock, Access Control Systems and other related security products.

3, How about the quality of your product?

With our exquisite technology and strict quality testing system, we passed "CE" and "ISO9001:2008" international quality assessment standards. Our company also has won many honors, such as "China Top 10 Parking Management System Supplier", "AAA grade quality, service and prestige enterprise in China", and so on. Professional R&D team has strong capacity to be committed to continuously creating high quality products and service.

4, How about some customization request?

We support OEM / ODM service, more than 20 years industry experience will bring appropriate design for you, not only products, but also a smart access management solution expert.

5, Do you have agency for after-sales service?

Any question about products, you can find our sales anytime. We will provide life-time technology support. We have established many branch offices and gained much agents at home. Our sales and service network spreads all over the world. We also have extensive sales channels in Southeast Asia, the Middle East, Africa, Europe, and America. We warmly welcome customers or agents all over the world to join us to construct an intelligent, safe, convenient and harmonious society.

6, How about the delivery time?

Regular products need 5-10 working days.

The delivery time of customized products is according to your requirement.

 **SEWO** Shenzhen SEWO Science & Technology Co., Ltd.

 +86 18128807893

 [sewo198@szsewo.com](mailto:sewo198@szsewo.com)

 [turnstilebarriers.com](http://turnstilebarriers.com)

Busha Road No 231. Buji Street. Longgang District. Shenzhen. China