

## 30people/Min Standard Tripod Turnstile Entrance Barrier Gate Stainless Steel Material

### Our Product Introduction

for more products please visit us on [turnstilebarriers.com](http://turnstilebarriers.com)

#### Basic Information

- Place of Origin: China
- Brand Name: SEWO
- Certification: CE ISO9001
- Model Number: SEWO-S5218
- Minimum Order Quantity: 1 lane
- Price: Negotiable
- Packaging Details: wooden box
- Delivery Time: 5-7 working days
- Payment Terms: T/T, Western Union, MoneyGram, L/C, D/A, D/P
- Supply Ability: 2000 sets per month



#### Product Specification

- Product Name: Tripod Turnstile
- Material: 304 Stainless Steel
- Warranty: 12 Months
- Arm Length: 510mm
- Size: 1200\*280\*960mm
- Passing Speed: 30people/min
- Power Supply: AC220V
- Weight: 70 Kg
- Working Environment: Indoor/Outdoor (with A Tent Over)
- Keyword: Tripod Turnstile
- Odm/oem: Accepted
- Motor: Brushless / Brushed Optional
- Highlight: **30people/min Standard Tripod Turnstile, Tripod Turnstile Entrance Barrier Gate, Entrance Barrier Gate Stainless Steel**



## Product Description

### Tripod Turnstile Mechanism Face Recognition Turnstile Entrance Barrier Gate

#### Discriptions of S5128 Tripod Turnstile:

The SEWO S5218 Series tripod turnstile is made by stainless steel , not only can use in indoor, but it also suitable for outdoor applications. It can be set as uni-directional or bi-directional to meed different scenario requirement. The S5218 turnstiles are ideally equipped for emergencies: It allows free passage if there is power outage or an alarm signal. With the drop-arm option, the upper arm drops downwards and thus provides free passage. after power is on, hand movement arm returns to original position.

The SEWO S5218 drive unit operates without maintenance,energy-saving and quietly.It can be embedded with all common access control systems, like IC/ID card (RFID card), finger print, passcode, facial Recognition, bar code,etc.

#### Key Features of Tripod Turnstile Gate:

Unique incomplete wheel transmission is adopted to make turnstiles held or unheld in zero position more accurate and reliable.

Running stable, little noise and no mechanical impact

Self-checking-power-on function, if power on, turnstile will auto get to be held.

Various working means can be set in the control panel menu,

If power off, arm will fall automatically while power on later, arm should be lift by hand. First press the arm with a little force and then lift it manually.

RS485 connection for far control arm up and down to satisfy the special needs or fire control requirements.

It is with standard electrical interface to connect various kinds of readers and writers for easy integration and also computer far control and management can be realized by computer.

It will count the pedestrian and will show the number on LED display directly. (LED is optional)

LED direction guide

Card reading memory or card reading without memory function can be set.

If working with software, the total-in-population can be set to satisfy special request.

Re-position function.

Card mounting is available.

Uncompleted wheel turning system is adopted for locking the turnstile in zero, and unlocking will be more reliable and accurate.

Expasion Functions(Optional):

1), Voice prompt

2), dual color, 4 words LED display

3), fingerprint card

4), spit vote

5), remote mode

Audio prompt function is optional.

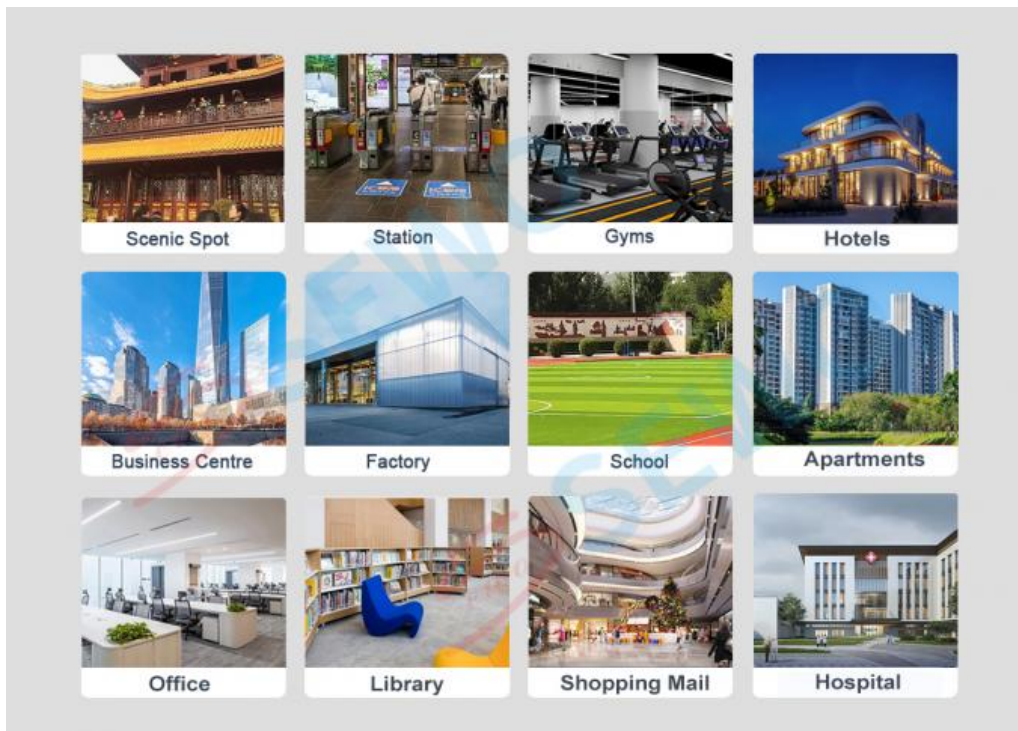
Effective railing barrier opening signal with memory and without memory can be set (adjustable).

#### Specifications of Turnstile Tripod Gate :

Product Name	Tripod Turnstile Series
Model No.	SEWO-S5218
Housing Material	SUS304 stainless steel
Swing Arm Material	304 stainless steel
Arm Length	510mm
Product Size(L*W*H)	1200*280*960mm
Unlock time	1s
Passing Speed	30 people/minute
Driving Motor	Brush motor
Working Voltage	220V
MCBF	≥ 3,000,000 times

#### Applications:

Tripod turnstiles are mainly used in parks, subway, customers, airport, bus station, office building, scenic spot, community, attractions, and exhibition hall doors, residential, Construction Sites, Industrial Plants, Marquee Golf Tournaments, State Fairs, Special Sporting Events and Festivals!



#### FAQ

1, What is the strength of your company in this industry?

Our company pays much attention to bringing and developing new technique and products since the foundation in 2003. Our brand "SEWO" has ranked among the top 10 famous brands of car parking systems and facilities in China.

2, What is the advantage products of your company?

Shenzhen Sewo Technology Ltd. is a professional high-tech enterprise, which integrates the development, manufacturing, marketing, and service of Smart Parking Management System, Flap Barrier, Tripod Turnstile, Swing Gate, Parking Guidance System, Barrier Gate, Parking Lock, Access Control Systems and other related security products.

3, How about the quality of your product?

With our exquisite technology and strict quality testing system, we passed "CE" and "ISO9001:2008" international quality assessment standards. Our company also has won many honors, such as "China Top 10 Parking Management System Supplier", "AAA grade quality, service and prestige enterprise in China", and so on. Professional R&D team has strong capacity to be committed to continuously creating high quality products and service.

4, How about some customization request?

We support OEM / ODM service, more than 20 years industry experience will bring appropriate design for you, not only products, but also a smart access management solution expert.

5, Do you have agency for after-sales service?

Any question about products, you can find our sales anytime. We will provide life-time technology support. We have established many branch offices and gained much agents at home. Our sales and service network spreads all over the world. We also have extensive sales channels in Southeast Asia, the Middle East, Africa, Europe, and America. We warmly welcome customers or agents all over the world to join us to construct an intelligent, safe, convenient and harmonious society.

6, How about the delivery time?

Regular products need 5-10 working days.

The delivery time of customized products is according to your requirement.

 **SEWO** Shenzhen SEWO Science & Technology Co., Ltd.



+86 18128807893



sewo198@szsewo.com



turnstilebarriers.com

Busha Road No 231. Buji Street. Longgang District. Shenzhen. China