

## Ultra Wide Flap Gate Barrier , Electronic High Speed Turnstile Flap Barrier

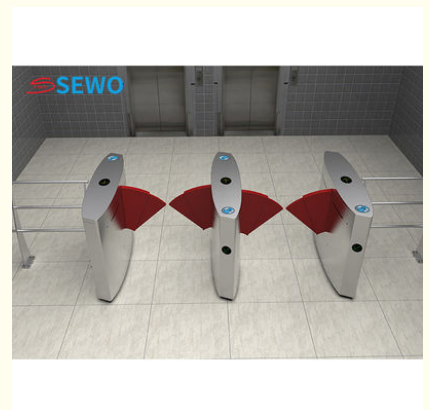
### Basic Information

- Place of Origin: China
- Brand Name: SEWO
- Certification: CE ISO9001
- Model Number: SEWO-Y2-300
- Minimum Order Quantity: 1 lane
- Price: Negotiable
- Packaging Details: wooden box
- Delivery Time: 5-7 working days
- Payment Terms: T/T, Western Union, MoneyGram, L/C, D/A, D/P
- Supply Ability: 2000 sets per month



### Product Specification

- Product Name: High Speed Turnstile With RFID IC ID Card Reader
- Type: Ultra Wide Flap Barrier Gate
- Dimension: 1500×300×1000mm
- Power Supply: AC220V
- Communication: RS485 TCP/IP, RS232/485
- Warranty: 12 Months
- Application: Airport, Office, hotel, supermarket, hospital Entrance
- Unlock Time: 0.3s
- Passing Speed: 45 People/min
- Working Environment: Indoor; Outdoor
- Highlight: **Ultra Wide Flap Gate Barrier,  
Electronic Turnstile Flap Barrier,  
High Speed Turnstile Flap Barrier**



## Product Description

### Electronic High Speed Turnstile Gates Ultra Wide Passageway Pedestrian Flap Barrier Gate

#### Discriptions of Windened Barrier Gate :

The Ultra Wide Flap Barrier Speed gates or speed gate turnstiles are advanced types of turnstiles used for pedestrian access control in various environments such as office buildings, train stations, airports, and stadiums. They are designed to allow rapid and controlled passage of individuals while maintaining security and preventing unauthorized access.

#### Key Features of High Speed Ultra Wide Flap Barrier Gate:

**High Throughput:** Speed gates are designed for high pedestrian throughput, allowing a large number of people to pass through quickly, especially during peak times.

**Security:** They enhance security by preventing tailgating (two people attempting to pass through on one authorization) and controlling entry/exit points effectively.

**Design:** Speed gates typically have a sleek and modern design, often made from materials like stainless steel and glass, which can complement the aesthetics of modern buildings.

**Integration:** They can integrate with various access control systems such as RFID card readers, biometric scanners (like fingerprint or facial recognition), barcode scanners, or ticketing systems.

**Operation:** Speed gates operate smoothly and quietly, often using sensors to detect the presence of individuals and ensure safe passage.

**Customization Options:** They come in different configurations such as single lane, dual lane, or multiple lanes depending on the volume of foot traffic and space available.

Overall, speed gate turnstiles provide efficient and secure access control solutions for environments where managing pedestrian flow and ensuring security are essential.

#### Specifications of High-end Turnstile Flap Barrier Gate :

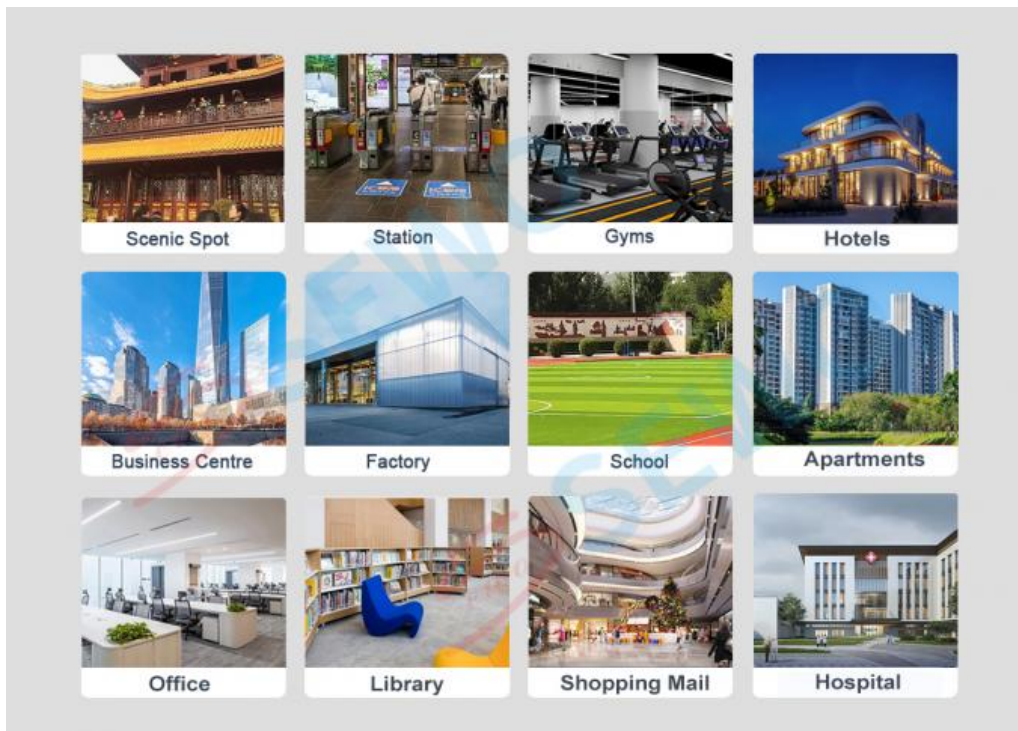
Product Name	Ultra Wide Flap Barrier Gate Turnstile Series
Model No.	SEWO-Y2-300
Housing Material	304 stainless steel
Swing Arm Material	PMMA or Tempered glass
Passing Width:	600-900 mm
Product Size(L*W*H)	1500×300×1000mm
Unlock time	0.3s
Infrared detection	12 Pairs
Passing Speed	45 people/ minute
Driving Motor	24V Brushless DC motor
Working Voltage	220V; 50Hz
MCBF	≥ 10,000,000 times

#### Advantages of High Speed Turnstile Gate

- 1). Running stably without noise and mechanical impact
- 2). The number of the passing persons can be counted via the built-in people counter
- 3). Several ways of working modes for option
- 4). Bi-direction or one direction permitted. One forbidden. Or one direction charged. One for free . And all the working modes set by the buttons in the main control board
- 5). Beam falling and lifting can be controlled in far distance so to satisfy the special require ment of the users and the request of fire protection
- 6). LED Direction-guide lights in the turnstile to tell you whether the direction to go or not
- 7).The standard electrical interface connected with various kinds of reader and writer equipments
- 8). All the functions realized in one integration machine and controlled and managed by the computer in the far distance
- 9). The number of the persons passed can be counted automatically which can also be display in LED
- 10). The function with or without card-reading memory can be set according to your demand
- 11). Self-check and alarm for convenient to operate

#### Applications:

Widely used in squares, stadiums, gyms, hotel, commercial building, offices , hospital , schools , factories, government agencies, bank, dormitory, library,shopping malls, supermarkets and so on.



#### FAQ

1, What is the strength of your company in this industry?

Our company pays much attention to bringing and developing new technique and products since the foundation in 2003. Our brand "SEWO" has ranked among the top 10 famous brands of car parking systems and facilities in China.

2, What is the advantage products of your company?

Shenzhen Sewo Technology Ltd. Is a professional high-tech enterprise, which integrates the development, manufacturing, marketing, and service of Smart Parking Management System, Flap Barrier, Tripod Turnstile, Swing Gate, Parking Guidance System, Barrier Gate, Parking Lock, Access Control Systems and other related security products.

3, How about the quality of your product?

With our exquisite technology and strict quality testing system, we passed "CE" and "ISO9001:2008" international quality assessment standards. Our company also has won many honors, such as "China Top 10 Parking Management System Supplier", "AAA grade quality, service and prestige enterprise in China", and so on. Professional R&D team has strong capacity to be committed to continuously creating high quality products and service.

4, How about some customization request?

We support OEM / ODM service, more than 20 years industry experience will bring appropriate design for you, not only products, but also a smart access management solution expert.

5, Do you have agency for after-sales service?

Any question about products, you can find our sales anytime. We will provide life-time technology support. We have established many branch offices and gained much agents at home. Our sales and service network spreads all over the world. We also have extensive sales channels in Southeast Asia, the Middle East, Africa, Europe, and America. We warmly welcome customers or agents all over the world to join us to construct an intelligent, safe, convenient and harmonious society.

6, How about the delivery time?

Regular products need 5-10 working days.

The delivery time of customized products is according to your requirement.

 **SEWO** Shenzhen SEWO Science & Technology Co., Ltd.



+86 18128807893



sewo198@szsewo.com



turnstilebarriers.com

Busha Road No 231. Buji Street. Longgang District. Shenzhen. China